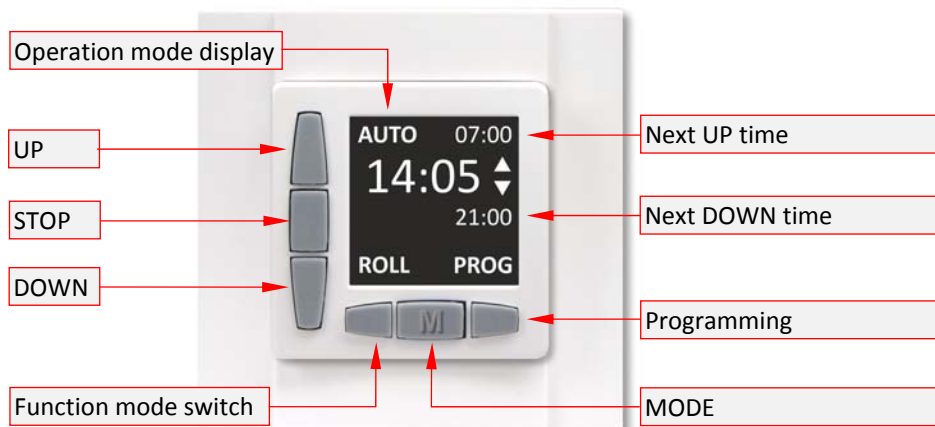


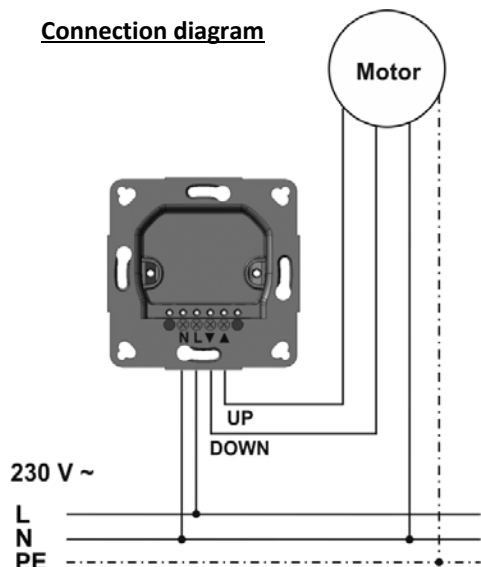
Operating instructions

ROJAL M - Timer

The ROJAL M is an electronic timer for controlling a 230V~ blind or shutter drive, with automatic timer, holiday switching, inching mode, automatic switchover winter/summer time and quick programming of switching times.



Connection diagram



Technical data

Operating voltage:	230V / 50Hz
Switching voltage:	250V AC
Switching capacity:	3A (cos phi=1)
Temperature range:	+5°C to +45°C
Travel time:	2 min.
Accuracy:	< 1 s / day
Power consumption:	0,5W
Power reserve:	≥ 72 hours
Terminals:	max. 2.5mm ²
Degree of protection:	IP 20
Safety class:	II



ATTENTION! Work on the 230V mains may only be carried out by authorised electricians!



This appliance is not intended for use by person (including children) with reduced physical, sensory or mental capabilities, or lack of experience and knowledge, unless they have been given supervision or instruction concerning use of the appliance by a person responsible for their safety. Children should be supervised to ensure that they do not play with the appliance.

Operating the timer

UP < 1 s	Inching mode, or STOP if motor running
UP > 1 s	UP drive command for 2 min.
DOWN < 1 s	Inching mode, or STOP if motor running
DOWN > 1 s	DOWN drive command for 2 min.
ROLL or JAL > 2 s	Switching the function mode ("ROLLER shutter" or "JALousie")
STOP	Stops the running motor
MODE > 2 s	Switching between operating modes (MAN, AUTO, AUTO±)
(STOP + UP) > 2 s	Quick programming of the UP switching time
(STOP + DOWN) > 2 s	Quick programming of the DOWN switching time
PROG < 2 s	Start programming / setting
PROG > 2s, then MODE > 8s	Reset to the factory setting

Possible operating modes

Press the MODE button (M) > 2 s to switch between the available operating modes. You can choose between 3 modes:

MAN	Manual operations (automatic timing deactivated)
AUTO	Automatic timing activated
AUTO±	Holiday switching (automatic timing + random generator activated)

In the **AUTO** mode the shutter is opened and closed automatically at the programmed switching times.

In the **AUTO±** mode, in addition to automatic timing the random generator activated. The programmed switching times are put back randomly by 1-30 minutes.

Inching mode / function mode switching

Inching mode (< 1 second short presses on the direction buttons) allows the slats of the blind to be tilted step by step or the roller shutter to be positioned more precisely. Inching mode is deactivated in the "Shutter" function mode (identified as ROLL in the display) and activated in the "Jalousie/Blinds" function mode (identified as JAL in the display). Inching mode can be activated or deactivated at any time by switching (ROLL or JAL button > 2 seconds) between the two function modes.

Reset / factory settings

Operating mode	MAN
Switching times	07:00 UP; 21:00 DOWN
Time / Date	01.07.2020

Switchover winter/summer time

The switchover from winter to summer time is done automatically by means of the set date, unless the automatic switchover was deactivated in the programming (see no 5 in "Programming the timer").



Programming the timer

1	Start programming
	Press PROG button > 2 s



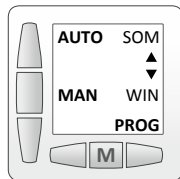
2	Setting the UP switching time
UP switching time blinks	Use the UP and DOWN buttons to set the desired daily UP switching time (first the hours then the minutes). Press the PROG button briefly to confirm each setting.



3	Setting the DOWN switching time
DOWN switching time blinks	Use the UP and DOWN buttons to set the desired daily DOWN switching time (first the hours then the minutes). Press the PROG button briefly to confirm each setting.



4	Setting the time and the date
Time blinks	Use the UP and DOWN buttons to set the current time and date. Press the PROG button briefly to confirm each setting



5	Switchover winter/summer time
AUTO or MAN blinks	Activate (AUTO) or deactivate (MAN) the automatic switchover between wintertime and summertime. Press the PROG button briefly to confirm the setting

	End programming
--	------------------------

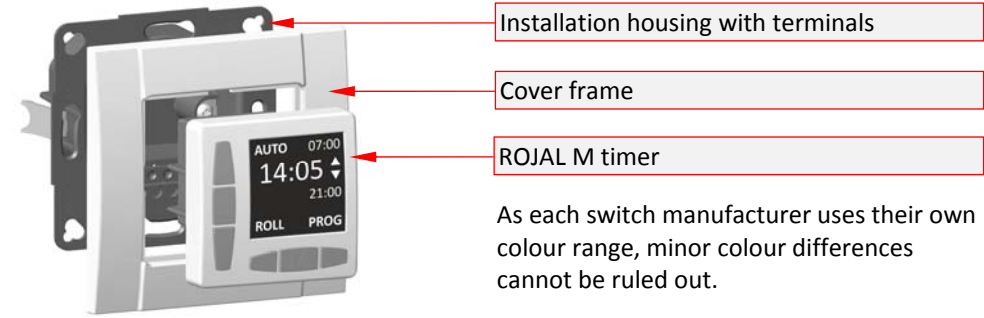
INFO: You can leave the programming at any time if required by pressing **PROG (M) > 2 s**. Any changes you have made up this point will be saved.

TIP: Quick programming of the switching times

In addition to the programming steps described above, if required you can take over the current time as the UP or DOWN switching time by pressing the button combination **(STOP+UP)** or **(STOP+DOWN) > 2 s**. The changed UP or DOWN switching time is then shown blinking in the display for 2 s.

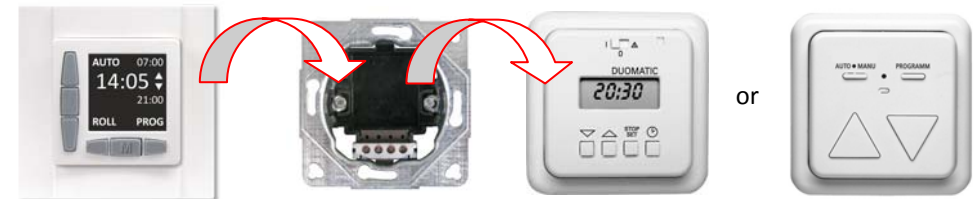
Compatibility with other switch programmes

The device's installation dimensions of 50 x 50mm (in accordance with DIN 49075) enable the device to be installed in most switch programmes from leading switch manufacturers. In this case, the cover frame of the ROJAL M must be replaced by the DIN intermediate or cover frame for the respective switch programme. The table below shows a selection of compatible switch programmes.



As each switch manufacturer uses their own colour range, minor colour differences cannot be ruled out.

The pluggable design and terminal assignment of the ROJAL M are compatible with several other popular models. For example, the Duomatic N, S, SD time switches or the 7013 memory switch can be exchanged for the ROJAL M by simply reconnecting them.



Compatible switch programmes (colour: ultrawhite similar to RAL 9010)

Manufacturer	Switch programme			
	Reflex SI	Impuls	Carat / Solo / Future	alpha nea / exclusive
Busch-Jaeger	Reflex SI	Impuls	Carat / Solo / Future	alpha nea / exclusive
Berker	Modul 2	Arsys	S.1 / B.1 / B.3 / B.7	K.1 / K.5
GIRA	S-Color	Standard 55	E2 / E22 / Event / Esprit	Surface switch
Merten	Artec	M1 / Atelier	M-SMART / M-ARC	M-PLAN / M-STAR
JUNG	CD 500	A 500	AS 500 / A Plus	LS-Design
Hager	Kallysto.pur	Kallysto.stil	Kallysto.art	
presto vedder	Regina	Alessa	Fiorena	
PEHA	Standard	Dialog	Aura	
ELSO	RIVA	Scala	Fashion	Novia
Popp	Forever	Pallas		